



Architecture International

2024

*Architecture
Design
Quantity Surveying
Project Management*

Introduction

m'S Architecture International is born as a result of the ongoing collaboration between Marco Scarpa, owner and principal architect of m'S Architecture and Giuseppe Filotto, Civil Engineer and Quantity Surveyor.

Having worked together since 2016 on various International Projects, and each man having a long and prestigious career in their respective fields, they have decided to combine their skills and experience to bring together a level of service, precision, and innovation that is a rare find in today's fast-paced markets.

The Principals

Marco Scarpa - Architect



Marco graduated from the Venice University of Architecture, Italy, and been registered with the professional Italian Album of Architects since 2003, including with the Historical Architects Album. He has taken part in numerous projects in both Italy and abroad and taken part in various prestigious International Competitions.

Giuseppe Filotto - Civil Engineer and Quantity Surveyor

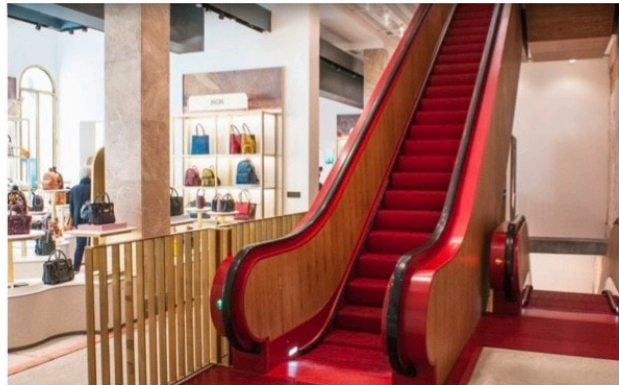


Giuseppe graduated at the Cape Peninsula University of Technology in Civil Engineering, in Cape Town, South Africa, and been involved in many projects in Africa, Europe, and Asia, including some world-renowned buildings and structures.

Portfolio

Combined, the portfolio of both Marco and Giuseppe would run to many pages, what we present here is only the highlights of some of the better known International Projects they have been involved in over the last decade or so.

Fondaco Dei Tedeschi - Venice, Italy



First constructed in 1228, the building was rebuilt between 1505 and 1508, after its destruction in a fire. The reconstruction produced a very functional four-floor building which surrounds a grand inner courtyard. Its architecture is typical of the Italian Renaissance style. Like the Fondaco dei Turchi, the Fondaco dei Tedeschi combined the functions of a palace, warehouse, market and restricted living quarters for its population, in this case mainly Germanic merchants from cities such as Nuremberg, Judenburg and Augsburg.

The ground floor was accessible by water and was used for storage, while the first floor was dedicated to offices and the upper floors contained about 160 living quarters.

Embassy Gardens - London, United Kingdom



A residential and business development in the Nine Elms regeneration zone in London, England, surrounding the United States Embassy building opened in 2017. It features the transparent Sky Pool for swimming, which is suspended 115 feet in the air between the development's prominent buildings.

Embassy Gardens was intended to provide up to 1,982 new homes alongside shops, cafes, bars, restaurants, business space, a 100 bed hotel, a health centre, children's playgrounds and sports pitches.

Talan Towers - Astana, Kazakhstan



A public and business complex located in the city of Astana, Kazakhstan. The complex consists of a podium and two towers with office, retail, hotel and residential premises. The 30-story Talan Towers Offices tower has a business centre, and the 25-story The Ritz-Carlton Hotel and Apartments. The towers are connected by a shopping gallery. The total area of the structure is around 106,194 m². It was built by order of the Kazakhstan group of companies 'Verny Capital' and opened in 2017. In March 2018, the project received the LEED GOLD certificate.

The Shard - London, United Kingdom



Also referred to as the *Shard London Bridge* and *London Bridge Tower*, is a pyramid-shaped 72-storey mixed-use development supertall skyscraper. Standing at 309.6 metres high, The Shard is the tallest building in the United Kingdom, the seventh-tallest building in Europe, and the second-tallest outside Russia behind the Varso Tower in Warsaw, which beats the Shard by less than half a metre. The Shard replaced Southwark Towers, a 24-storey office block built on the site in 1975.

Construction began in March 2009; and practical completion was achieved in November 2012. The tower's privately operated observation deck, *The View from The Shard*, was opened to the public on 1 February 2013. The glass-clad pyramidal tower has 72 habitable floors, with a viewing gallery and open-air observation deck on the 72nd floor, at a height of 244 metres.

Apple HQ and Campus - Battersea, London, United Kingdom



The newest Apple Headquarters in London opened in the renovated Battersea Power Station in London in June 2023. Battersea Power Station is at the heart of one of central London's largest, most visionary and eagerly anticipated new developments, which became home to a community of homes, shops, bars, restaurants, cafes, offices and over 19 acres of public space.

The Power Station was the second phase to open to the public on the 14th October 2022. This truly mixed-use building is home to Apple's London Campus, with the original design of Apple's HQ by Norman Foster. The development of the offices and their substructure was the result of a partnership and working groups of various architectural and design co-ordinations to bring to fruition the original design.

The Grosvenor House Hotel - London, United Kingdom



The JW Marriott Grosvenor House London, formerly the Grosvenor House Hotel, is a luxury hotel that opened in 1929 in the Mayfair area of London, England. Across from Hyde Park, the hotel is built on the former site of the 19th century aristocratic Grosvenor House residence. The hotel is managed by JW Marriott Hotels, which is a brand of Marriott International, and it is owned by Katara Hospitality.

The hotel underwent a four-year renovation and restoration costing £142 million, and it reopened in 2008. This included a full refurbishment of all restaurants, guest rooms, health facilities, and public areas. The Great Room, Ballroom, Court Suite, restaurants, bars, meeting spaces and 494 guest rooms can accommodate a total of over 6,000 people.

Commitment

m'S Architecture International is headed by two men who have never compromised on their loyalty, commitment and professionalism to their clients. Having worked at the highest international levels, and used to interfacing with VIPs ranging from wealthy public persons, foreign diplomats, dignitaries, and even presidents, we understand the need for the privacy of our clientele, as well as the need for transparent and professional service of the very highest standards.

We are committed to producing only the very best quality of work for all our customers, so as to leave them with a finished product that they can be proud of and where they wish to do so, they can showcase to the world.

We look forward to working with you in order to realise your vision.

Contacts

m'S Architecture International
Via Cappuccina, 15D
Venezia (VE)
30172
Italy

Marco Scarpa: Marco@Filotto.org Phone: +39 335 767 5040

Giuseppe Filotto: Giuseppe@Filotto.org Phone: +39 3270892414 or
+44 7788796035